

home8

Mini Cube HD camera Quickstart Guide

Model No. IPC2202

What's inside:



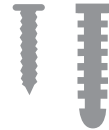
1x Mini Cube HD camera



1x Power Adapter



1x Power Cable



Mounting accessories

To save video clips locally or turn on the continuous recording function, a MicroSD card (FAT32, SDHC type) is needed.

Note:

1. Please insert the MicroSD card into the camera when it is powered off to avoid damage to the MicroSD card.
2. Video recording service require service subscription, please visit our website for more information

Operates on 2.4GHz Wi-Fi signal

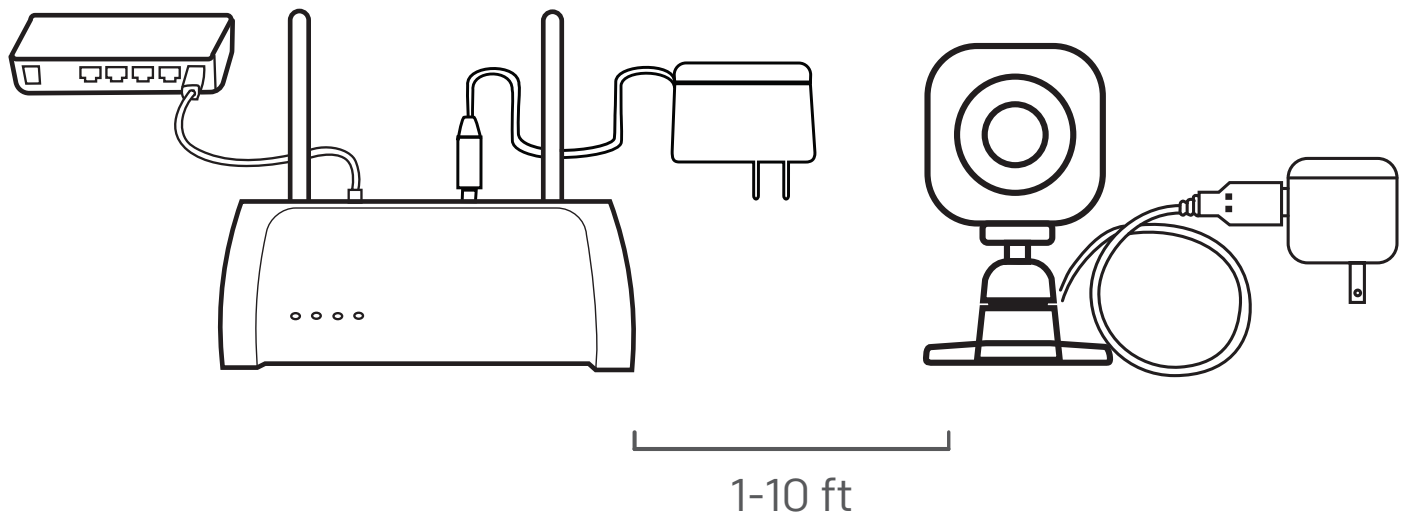
Note: 2.4GHz has better Wi-Fi transmission distance and is less prone to interruption from the obstruction of solid objects.

Virtual gateway does not support 5GHz Wi-Fi features.

Option 1: Add it with your existing home8 system

Step 1: Assemble your device and accessories

1. Unpack your device and accessories.
2. Pair the Camera with the Security Shuttle within 1-10 feet to make sure the connection is working well.
3. Connect the included power adapter to the Mini Cube HD Camera and plug it in.



Need help installing your Home8 system?

Visit our FAQ page: <http://www.home8alarm.com/faq/>

User Manuals: <http://www.home8alarm.com/manuals/>

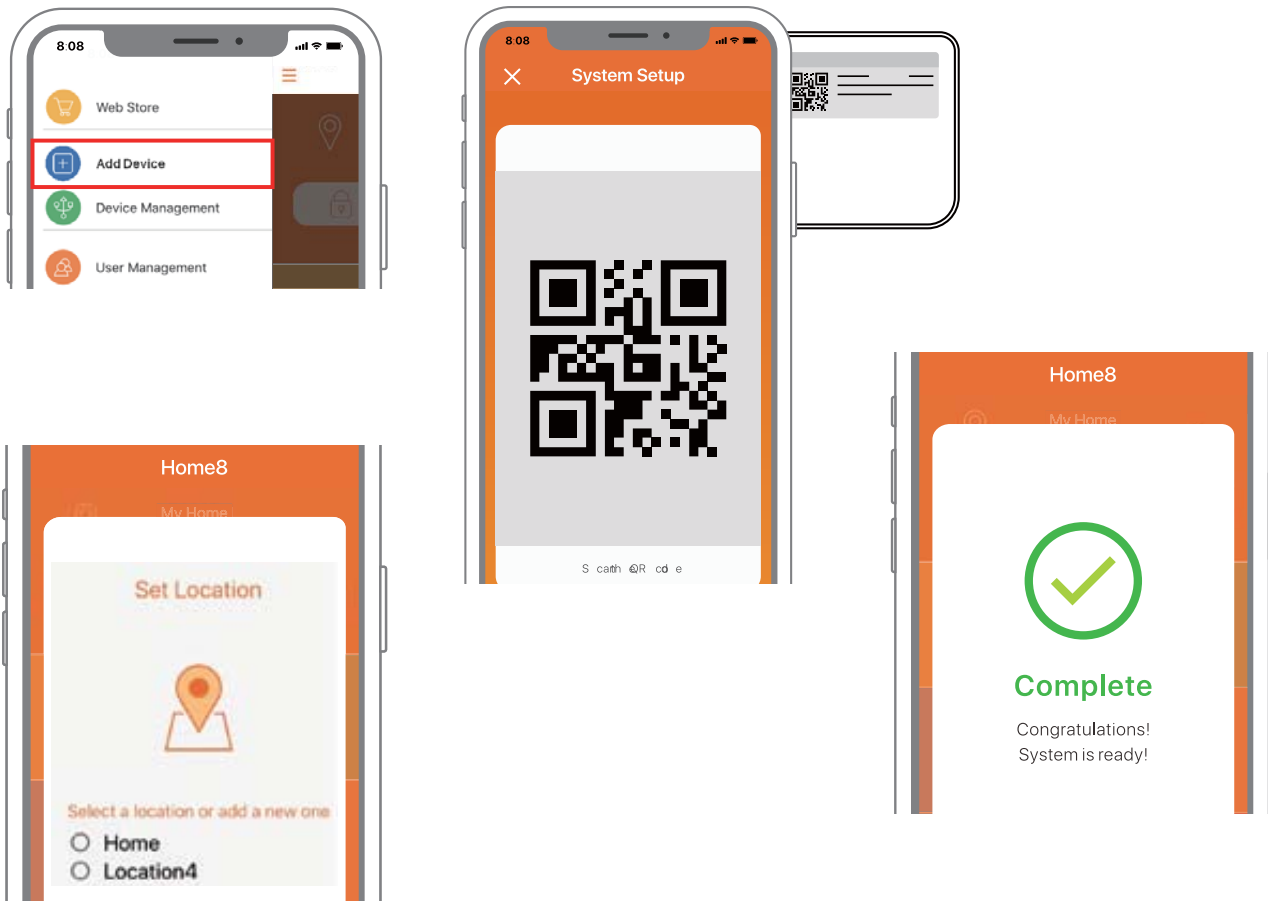
Email us: support@home8alarm.com

Step 2: Add a device

1. Open the Home8 app, tap on the menu button "≡" and select "Add Device".
2. Find QR Code on the device and follow instruction.
3. Set Location: if you have multiple systems, select the location where you would like to add the device.

Note: If the scan is incomplete, you will be asked to enter the serial number (SN) of the device.

4. When the activation is completed, the device will be added to the device management page.

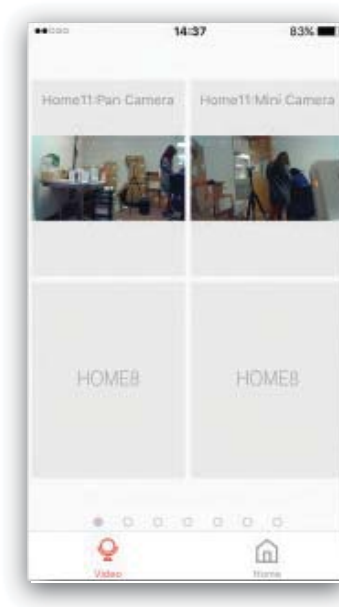


Step 3: Place your device

Before you mount your device, see if it's within Security Shuttle's range.

1. Take it to the room you want to use it in and plug it in.
2. Access your Home8 app, tap on the Video, wait until you see live streaming video from the app, it is connected to the system.

Now you can place your camera and enjoy.



Option 2: Use as Standalone

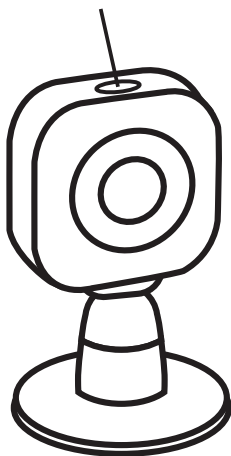
Step 1: Set up your smartphone

1. Connect your Smartphone to Wi-Fi.
2. Download the Home8 app from the App Store, Google Play, or Windows store.
3. Follow the steps to create an account.

Step 2: Assemble your device and accessories

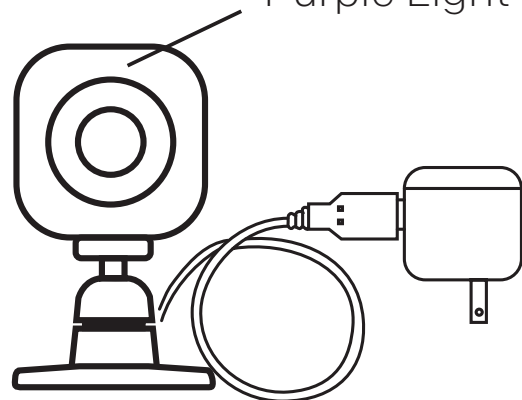
After the camera is powered on, short press the button on top of the camera to switch to "Local Mode". In "Local mode", the top LED indicators will show a solid purple light.

Mode Change Button



Local Mode

Purple Light

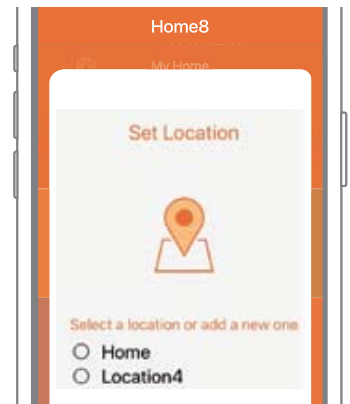
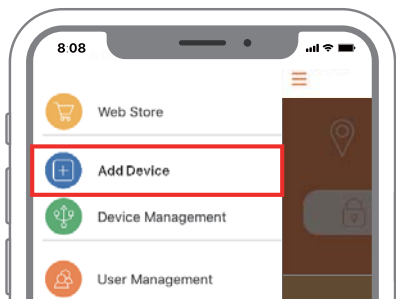


Step 3: Add it to the System with Virtual Gateway

Note: Make sure your Wi-Fi router is on.

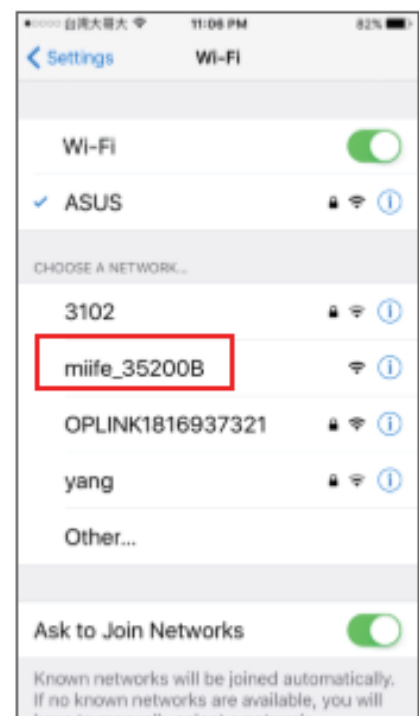
Make sure the Wi-Fi of your smartphone is on

1. Tap the side bar “≡” to show the sidebar menu; then, tap “Add Device”.
2. Find the QR Code on the device and scan the QR Code.
3. Set Location by naming a new location, then press “Next”.

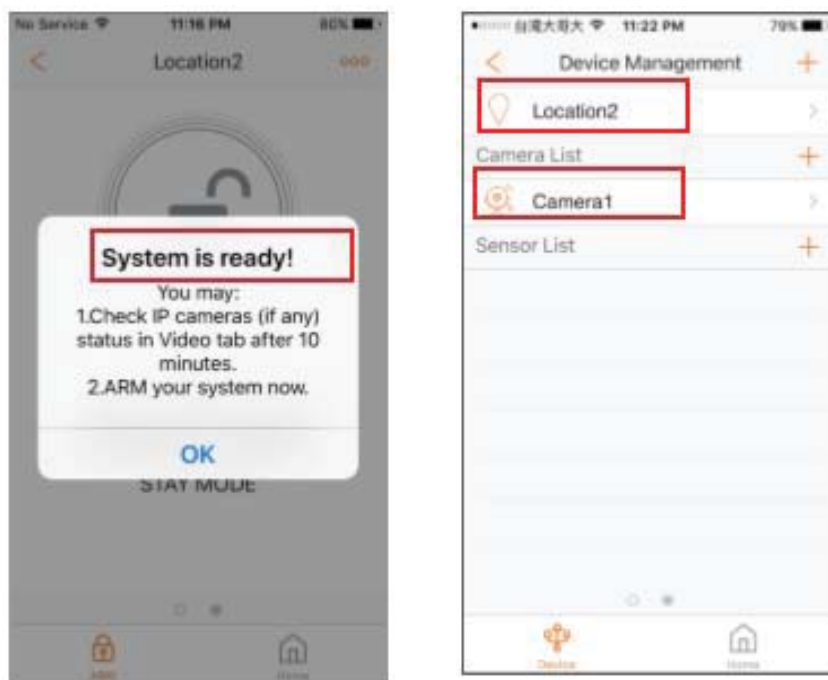


Step 4: Sync Virtual Gateway with Wi-Fi Network

1. After scanning the QR code located on the back of the camera, tap "Close"; then, tap "Settings" to access your smartphone's Wi-Fi settings page to let your smart device connect to the IP camera network. Select the SSID marked as "miife", followed by the last 6 digit of the camera's serial number located on the back (S/N__xxxxxx); then follow the subsequent on-screen instructions.
2. After connecting to the camera network, launch the app again. Select your Wi-Fi network and enter the password if necessary. When finished, tap "Join".



3. Follow the on-screen instructions.
4. After the activation is completed, you will see the message "System is ready" on the screen. By clicking "OK", a virtual Security Shuttle and the camera will be added to the device management page.



Troubleshooting Tips

If you're having trouble adding your device, you may need to reset it.

- Locate the pinhole on the left side of the camera
- Insert a pin and hold for 3-5 seconds until you hear a beep
- Return to Step 2 and add the device again

Reset Button

