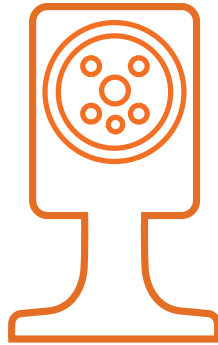


home8

Wi-Fi Camera Quickstart Guide

Model No. IPC1200

What's inside:



1x Wi-Fi Camera



1x Power Adapter



1x Extension Cable



Mounting accessories

Operates on 2.4GHz Wi-Fi signal

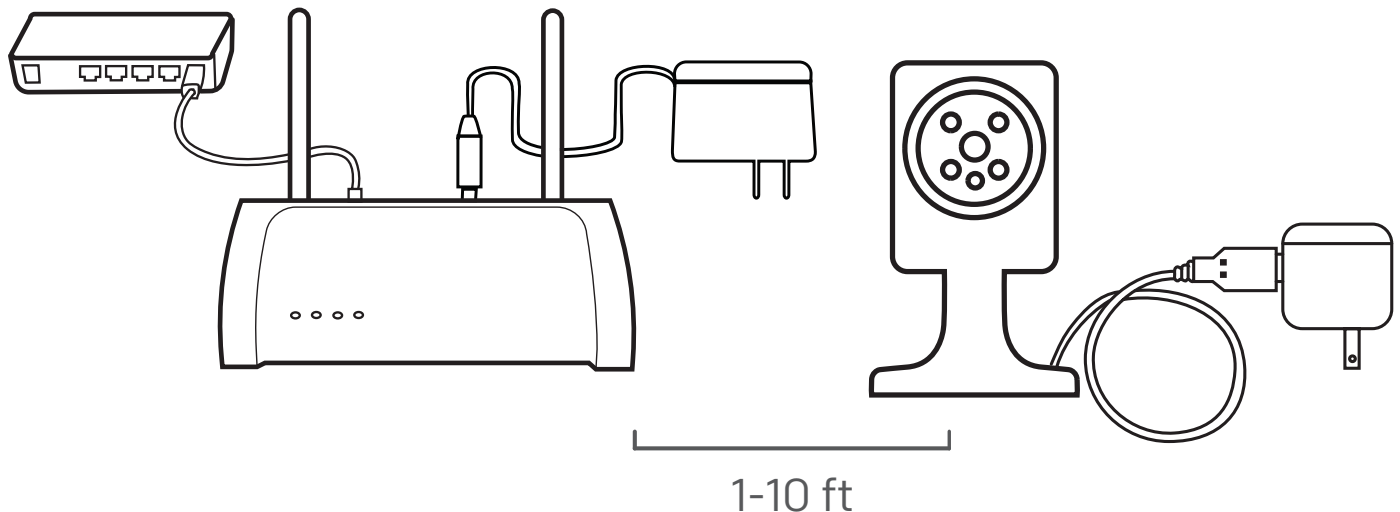
Note: 2.4GHz has better Wi-Fi transmission distance and is less prone to interruption from the obstruction of solid objects.

Virtual gateway does not support 5GHz Wi-Fi features.

Option 1: Add it with your existing Home8 system

Step 1: Assemble your device and accessories

1. Unpack your device and accessories.
2. Pair the Camera with the Security Shuttle within 1-10 feet to make sure the connection is working well.
3. Connect the included power adapter to the Wi-Fi Camera and plug it in.



Need help installing your Home8 system?

Visit our FAQ page: <http://www.home8alarm.com/faq/>

User Manuals: <http://www.home8alarm.com/manuals/>

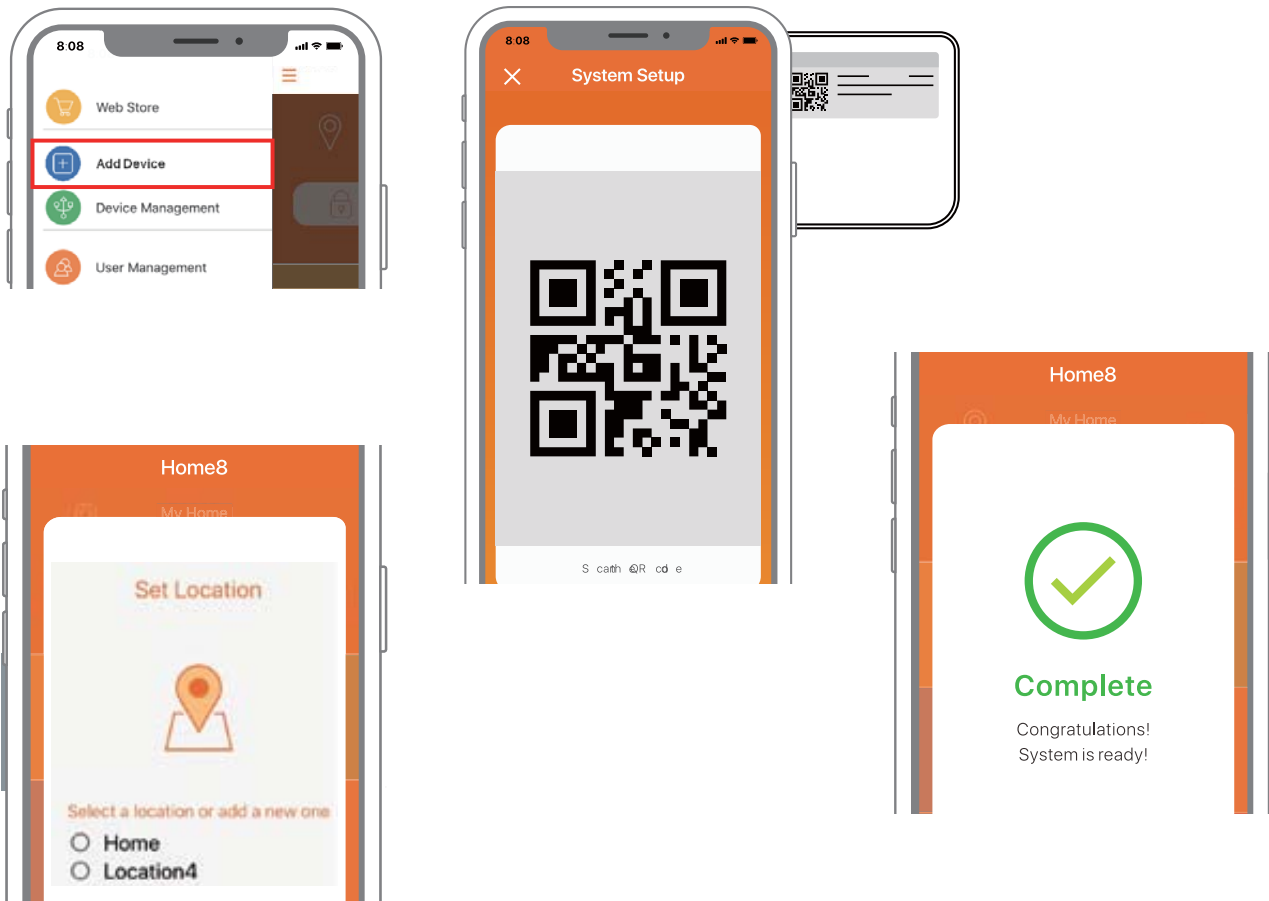
Email us: support@home8alarm.com

Step 2: Add a device

1. Open the Home8 app, tap on the menu button "≡" and select "Add Device".
2. Find QR Code on the device and follow instruction.
3. Set Location: if you have multiple systems, select the location where you would like to add the device.

Note: If the scan is incomplete, you will be asked to enter the serial number (SN) of the device.

4. When the activation is completed, the device will be added to the device management page.

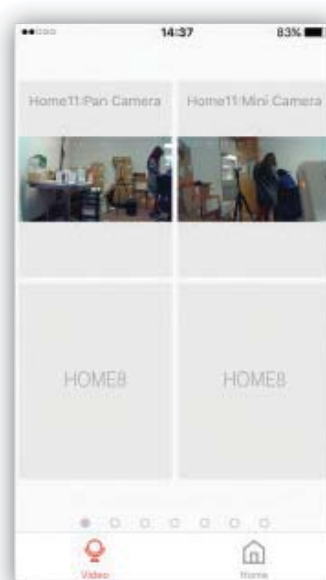


Step 3: Place your device

Before you mount your device, see if it's within the Security Shuttle's range.

1. Take it to the room you want to use it in and plug it in.
2. Wait for the camera to connect, then access your Home8 app. Tap on the Video and wait until you see live streaming video from the app. Once connected, place your camera where you want and enjoy.

Now you can place your camera and enjoy.



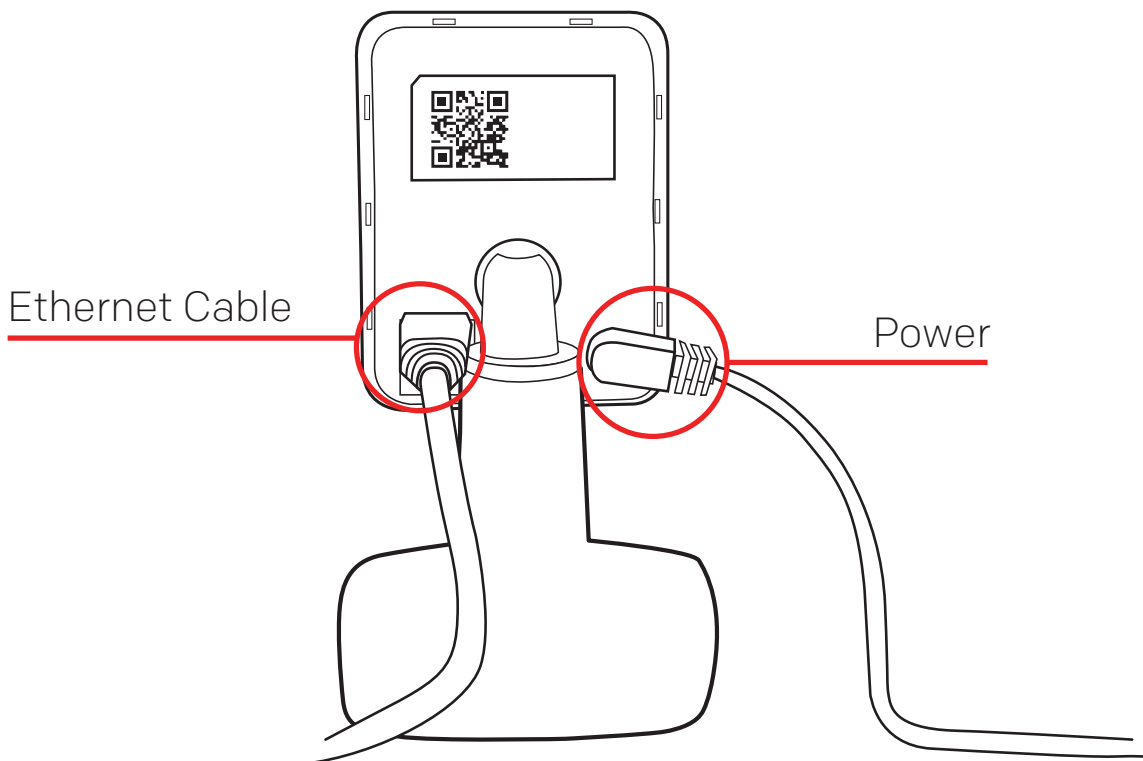
Option 2: Add it with Virtual Gateway

Step 1: Set up your smartphone

1. Connect your Smartphone to Wi-Fi.
2. Download the Home8 app from the App Store, Google Play, or Windows store.
3. Follow the steps to create an account.

Step 2: Assemble your device and accessories

1. Connect an ethernet cable between the camera and your home router.
2. Power on the camera.

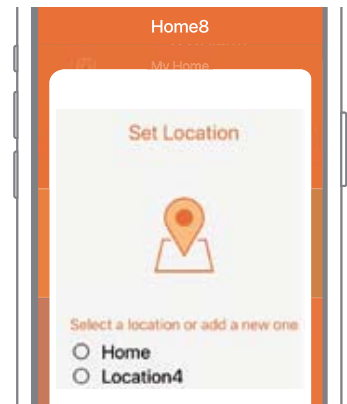
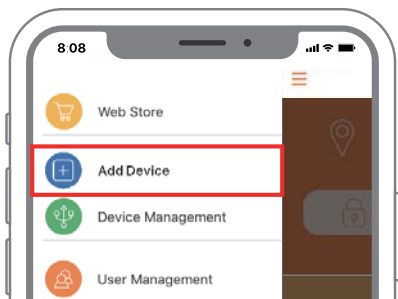


Step 3: Add it to the System with Virtual Gateway

Note: Make sure your Wi-Fi router is on.

Make sure the Wi-Fi of your smartphone is on

1. Tap the side bar “≡” to show the sidebar menu; then, tap “Add Device”.
2. Find the QR Code on the device and scan the QR Code.
3. Set Location by naming a new location, then press “Next”.

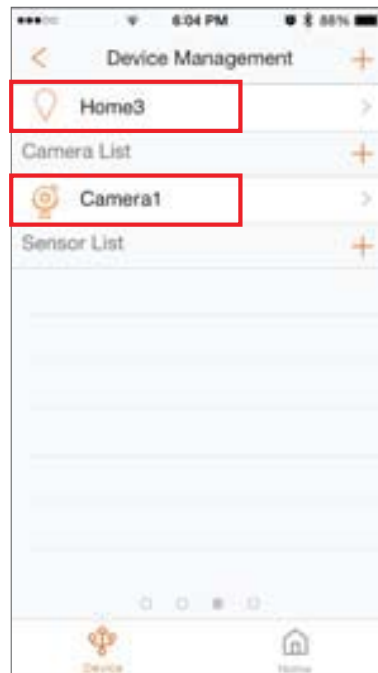
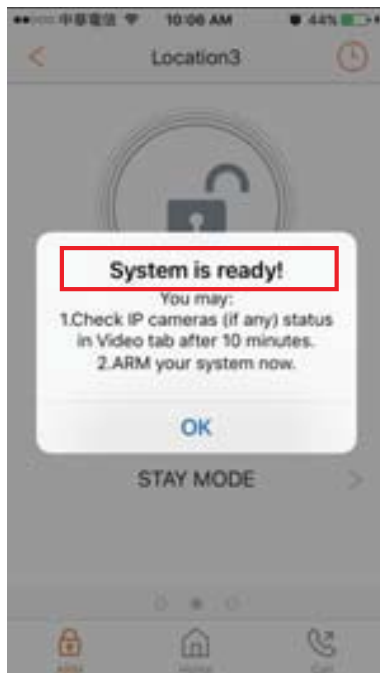


Step 4: Sync Virtual Gateway with Wi-Fi Network

1. After scanning the QR code, select your Wi-Fi network and enter the password if necessary. When finished, tap "Join".
2. Follow the on-screen instructions.



3. After the activation is completed, you will see the message "System is ready!" on the screen. By tapping "OK", a virtual gateway and the camera will be added to the device management page.



Troubleshooting Tips

If you're having trouble adding your device, you may need to reset it.

- Push and hold the reset button located on the backside of the camera for more than 5 seconds.
- Return to the app and add the device again.

Reset Button

