

home8

Garage Door Control Button

Quickstart Guide

Model No. WGO2001

What's inside:



1x Garage Door Control Button



1x Power Adapter



2x U-fork Wires



Mounting Accessories
and Double-sided Tape



1x Power Cable



2x 18-Gauge Wires

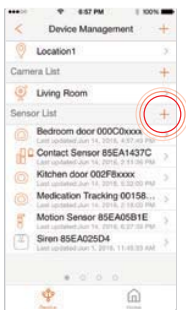
Option 1: Add it with your existing home8 system

Step 1: Assemble your device and accessories

1. Unpack your device and accessories.
2. Pair the Garage door control button with the Security Shuttle within 1-10 feet to make sure the connection is working well.
3. Connect the included power adapter to the Garage door control button and plug it in.

Step 2: Add a device

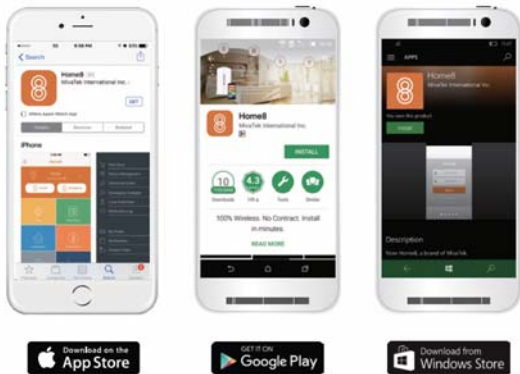
1. Open the Home8 app, tap on the menu button "≡" and select "Device Management".
2. Press the add button '+' next to "Sensor".
3. Follow the app instructions to scan the QR code located on the back of the device
4. When the activation is completed, the LED status light will become solid green.



Option 2: Add it with Virtual Gateway

Step 1: Set up your smartphone

1. Connect your Smartphone to Wi-Fi.
2. Download the Home8 app from the App Store, Google Play, or Windows store.
3. Follow the steps to create an account.



Step 2: Assemble your device and accessories

1. Before the device is powered on, press and hold down the button.
2. While holding down the button, attach the power cable.
3. Continue holding down the button for 5 seconds until blinking (orange-red) starts.

Step 3: Add it to the System with Vitural Gateway

Note: Make sure your Wi-Fi router is on.

Make sure the Wi-Fi of your smartphone is on

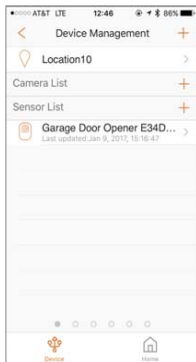
1. Tap the side bar "☰" to show the sidebar menu; then, tap "Device Management".
2. Swipe left across the screen and select "Wi-Fi Sensor".
3. Follow the on-screen instructions. When finished, press "Next".



Option 2: Add it with Virtual Gateway

Step 4: Connect the Device to the Wi-Fi Network

1. After scanning the QR code located on the back of the device, the system will ask you to enter your Wi-Fi password then follow the on-screen instruction to complete the process.
2. When the activation is completed, the LED status light will become solid green. The sensor now is added to the device management page.

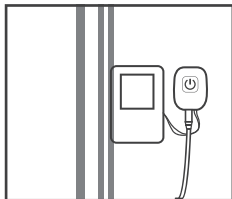


Choose Your Installation Method

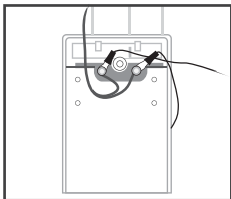
Review the 3 installation methods below and refer to the user manual of your specific garage door opener before you install your garage door control button.

For more information, including a list of compatible garage door openers, visit home8alarm.com/faq.

Method 1: Use it with your wall existing switch



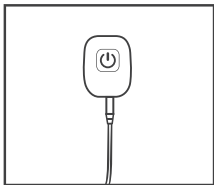
With existing wall switch



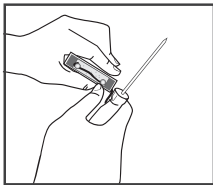
Attach U-fork wires

- Unscrew your existing garage door wall switch
- Locate the two wires that connect to your garage motor. Loosen the screws that hold them in place
- Attach one U-fork wire under each screw and tighten
- Re-mount your existing wall switch

Method 2: Replace your existing wall switch



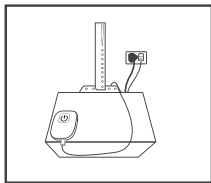
Replacing existing switch



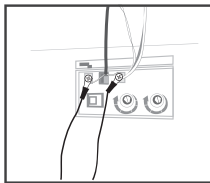
Remove switch completely

- Unscrew your existing garage door wall switch
- Locate the two wires that connect to your garage motor. Loosen the screws that hold them in place
- Remove your garage door wall switch completely
- Continue to next step

Method 3: Attach it to your garage door motor



Attached to motor

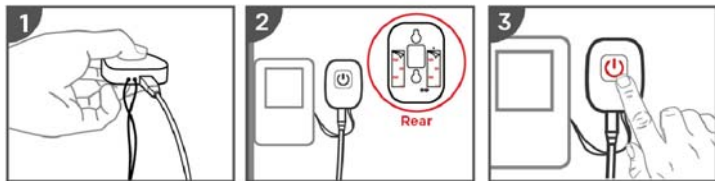


Wire to garage door motor

- Access the wire panel on your garage door motor unit
- Locate the two wires that connect to your garage door wall switch. If you have trouble finding them, please refer to the user manual of your garage door motor to determine which wires connect to your wall switch. Or give us a call, we'll be happy to help.
- Depending on your motor, use U-fork wires or straight wires to connect your new garage door control button to your garage door motor
- Continue to next step

Mount and test your device

1. Insert the loose wires into the bottom of your Home8 garage door control button (one per hole, the order doesn't matter).
2. Plug in your Home8 garage door control button with the included power cable and adapter, then mount your control button with screws or double-sided tape.
3. In the Home8 app, navigate to **Automation > Garage Door Opener** and press the red power button. Your app should now be able to operate your garage door.



Troubleshooting Tips

If you're having trouble adding your device, you may need to reset it

- Press the reset button on the back of the device with a pin for approximately 5 seconds
- The LED will flash red and green then orange to green flashing
- Return to Step 2 and add the device again