



## Twist HD camera Quickstart Guide

Model No. IPC2201

### What's inside:



1x Twist HD Camera



1x Power Adapter

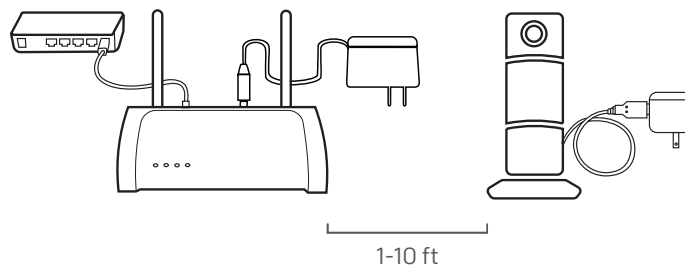


1x Power Cable

## Option 1: Add it with your existing home8 system

### Step 1: Assemble your device and accessories

1. Unpack your device and accessories.
2. Pair the Camera with the Security Shuttle within 1-10 feet to make sure the connection is working well.
3. Connect the included power adapter to the Twist HD Camera and plug it in.

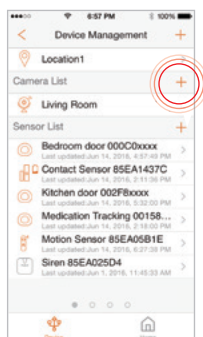


### Step 2: Add a device

1. Open the Home8 app, tap on the menu button "≡" and select "Device Management".
2. Press the add button '+' next to "Camera".
3. Follow the app instructions to scan the QR code located on the button of the device.

Note: If the scan is incomplete, you will be asked to enter the serial number (SN) of the device.

4. When the activation is completed, the device will be added to the device management page.

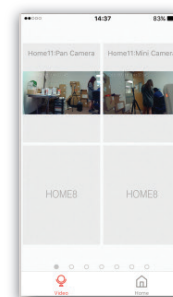


### Step 3: Place your device

Before you mount your device, see if it's within Security Shuttle's range.

1. Take it to the room you want to use it in and plug it in.
2. Access your Home8 app, tap on the Video, wait until you see live streaming video from the app, it is connected to the system.

Now you can place your camera and enjoy.



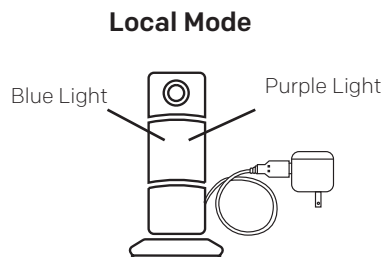
## Option 2: Add it with Virtual OPU

### Step 1: Set up your smartphone

1. Connect your Smartphone to Wi-Fi.
2. Download the Home8 app from the App Store, Google Play, or Windows store.
3. Follow the steps to create an account.

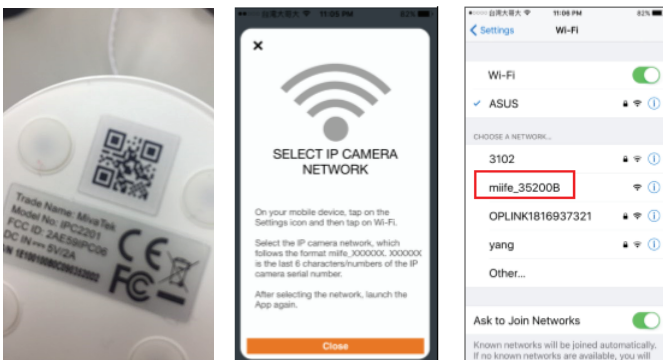
### Step 2: Assemble your device and accessories

1. After the camera is powered on, short press the button on top of the camera to switch to "Local Mode". In "Local mode", the left and right LED indicators will respectively show a solid blue and purple light.



### Step 3: Sync Virtual OPU with Wi-Fi Network

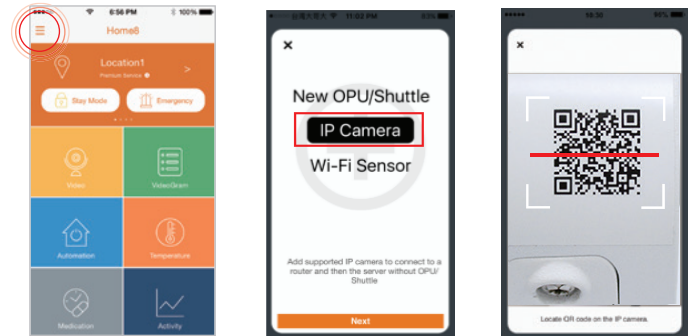
1. After scanning the QR code located on the bottom of the camera, tap "Close"; then, tap "Settings" to access the Wi-Fi settings page to let your smart device connect to the IP camera network. Select the SSID marked as "miife", followed by the last 6 digit of the camera's serial number located on the bottom ( S/N\_\_xxxxxx); then follow the subsequent on-screen instructions.
2. After connecting to the camera network, launch the app again. Select your Wi-Fi network and enter the password if necessary. When finished, tap "Join".



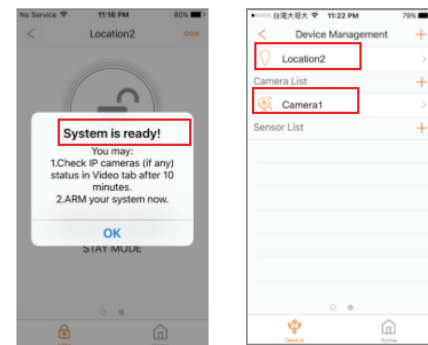
### Step 2: Add it to the System with Vitural OPU

Note: Make sure your Wi-Fi router is on.  
Make sure the Wi-Fi of your smartphone is on

1. Tap the side bar " ≡ " to show the sidebar menu; then, tap "Device Management".
2. Swipe left across the screen and select "IP Camera".
3. Follow the on-screen instructions. When finished, press "Next".



3. Follow the on-screen instructions.
4. After the activation is completed, you will see the message "System is ready" on the screen. By clicking "OK", a virtual Security Shuttle and the camera will be added to the device management page.



### Troubleshooting Tips

If you're having trouble adding your device, you may need to reset it

- Remove the top cover and locate the pinhole
- Insert a pin and hold for 3-5 seconds until you hear a beep
- Return to Step 2 and add the device again