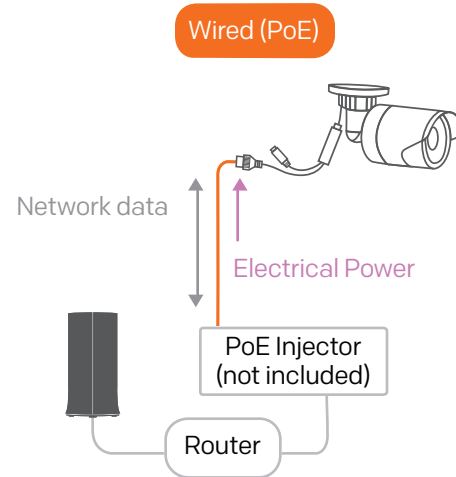


Option 2: Wired

- i. Make sure a PoE Injector and two Cat5 cables are available before the connection. (PoE Injector and Cat5 cables are not included in the package)
- ii. Using a Cat5 cable, connect the PoE Injector to the same router that the Home8 Security Shuttle is connected. Using the other Cat5 cable, connect the PoE Injector to the Camera's Ethernet interface and DC power will be delivered to the Camera and data will be transferred. Power on the PoE Injector.

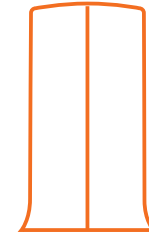


home8

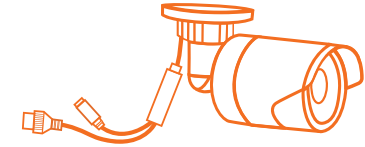
Mini Outdoor Full HD 2-Camera Interactive Security Camera System Quickstart Guide

Model No. V63020US

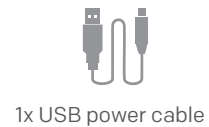
What's inside:



1x Security Shuttle



2x Mini outdoor Full HD cameras

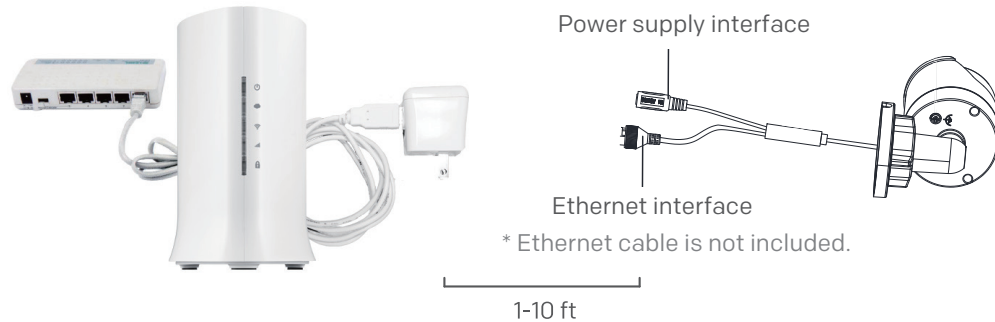


What you'll need:

- Broadband Internet
- iPhone or Android phone
- Home router

Step 1: Unpack your devices and accessories

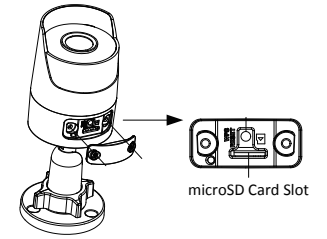
1. Unpack your devices and accessories.
2. Pair the Camera with Security Shuttle within 1-10 feet to make sure the connection is working well.



Step 2: Power on the Camera and connect it to the system

1. Insert the microSD* card into the Camera Card Slot before powering up the Camera, if you want to have continuous video recording.

* NOTE - microSD Card not included. You can proceed to section Step 2.2 Power on the Camera and Connect. You can also purchase a microSD Card at a later time and insert this by following Step 2.1 to enable the continuous video recording feature.

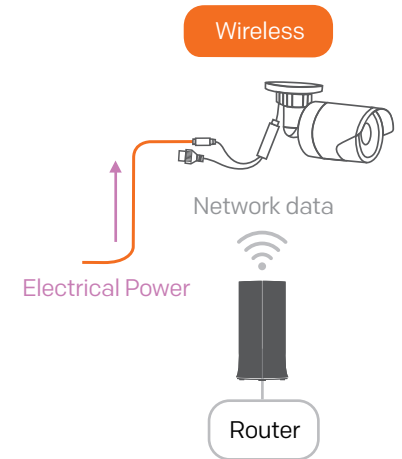


2. Power on the Camera and connect it to the system.

There are two methods for powering and connecting. Please review the two options and decide which option you would like to use:

Option 1: Wireless

Connect the included power adapter to the Camera's power supply interface.



Troubleshooting Tips

Are your devices communicating with Security Shuttle?

- If your devices don't connect to Security Shuttle, they might be too far away. Take them to a location that's closer to Security Shuttle and try again.
- If they do connect, you'll know the range of your sensor and where to install a range extender.
- Alternatively, you can move Security Shuttle closer to your device.
- If your devices still don't communicate with Security Shuttle, even when they're in the same room, navigate to **≡ > Device Management > +** on the Home8 app to add your devices again.

How to reset the camera if the app tells you to do so:

- Use the wrench to open the cover which is located on the bottom of camera.
- Make sure the camera is powered off first. Press down the RESET button, then power on the camera, continue holding down the RESET button for around 10 seconds until the IR LED goes off.
- Return to the app and follow the onscreen instructions.

Need help installing your Home8 system?

Call 1-844-800-6482, Mon-Fri 9am-7pm, Pacific.

<http://www.home8alarm.com/download/support@home8alarm.com>

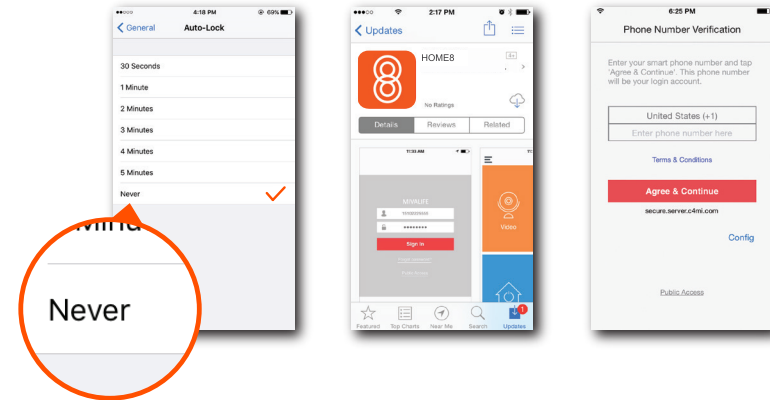


99200255MIG

V1.0

Step 3: Set up your smartphone

Your phone will disrupt the setup process if it goes to sleep. So before you register your devices, disable the autolock feature on your smartphone. You can enable it after you've set up your system.



Next:

- Connect your smartphone to your home Wi-Fi
- Download the Home8 app from the App Store or Google Play
- Follow the on-screen instructions and set up your account

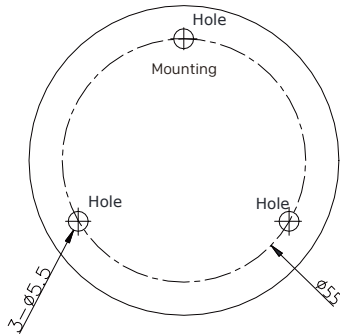
Step 4: Before mounting your device

1. Before mounting your camera, see if it is within Security Shuttle's range by taking the Camera to the place where you want it to be mounted and plug it in.
2. Wait until you see live streaming video from the Home8 app before mounting.

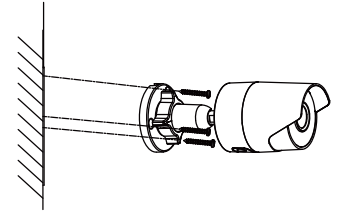
Step 5: Installation

Both wall mounting and ceiling mounting are suitable for the Camera. Wall mounting will be taken as an example in this section. If you decide to go with the ceiling mounting as your method of installation, then you can use the wall mounting steps as a reference.

1. Drill the screw holes into the wall according to the drill template.



2. Route the corresponding cables.
3. Secure the camera to the wall with the supplied screws.



Secure the Camera to the Wall

4. Adjust the surveillance angle.

- Loosen the adjusting nut.
- Adjust the pan direction [0° to 360°].
- Adjust the tilt direction [0° to 90°].
- Rotate the camera [0° to 360°] to adjust the lens to the surveillance angle.
- Tighten the adjusting nut to complete the installation.

