



# Garage Door Control Button

---

WGO2001





## User Manual

[home8alarm.com](http://home8alarm.com)

1-844-800-6482 | [support@home8alarm.com](mailto:support@home8alarm.com)

# Table of Contents

---

<b>Chapter 1. Introduction.....</b>	<b>3</b>
1.1 System Requirement .....	3
<b>Chapter 2. Hardware Overview.....</b>	<b>4</b>
<b>Chapter 3. Garage Door Control Button Setup .....</b>	<b>5</b>
3.1 Powering up the sensor .....	5
3.1.1 Press and hold down the button .....	5
3.1.2 While holding down the button, attach the power cable .....	6
3.1.3 Continue holding down the button for 5 seconds until blinking (orange-red) starts .....	6
3.2 Adding the Sensor to an OPU/Shuttle.....	7
3.2.1 Tap the menu icon  to show the sidebar menu.....	7
3.2.2 Tap “Device Management”. If you have more than one security shuttle, you may need to swipe left more than once to find the OPU/Shuttle to which you would like to add the sensor.....	7
3.2.3 Tap on the ‘+’ next to Sensor List. Tap on ‘Sensor’ at the bottom of the page. ....	8
3.2.4 Follow the on-screen instructions and press “Next”. Scan the QR-code located on the bottom of the sensor and the “device adding” process will begin. ....	8
3.2.5 When the activation is completed, the sensor will be added to the device management page. In the illustration below, the name of the Security Shuttle is “Location10” and the name of the sensor is “Garage Door Opener E34D...” .....	9
3.3 Adding the Sensor to a Virtual OPU/Shuttle.....	10
3.3.1 Tap the menu icon  to show the sidebar menu.....	10
3.3.2 Tap “Device Management”. If you have more than one security shuttle, you may need to swipe left more than once to find the “New OPU/Shuttle” page. ....	10
3.3.3 Select “Wi-Fi Sensor” and press “Next” .....	11
3.3.4 Follow the on-screen instructions and press “Next”. ....	11
3.3.5 Scan the QR-code located on the bottom of the sensor and the “device adding” process will begin. Enter the password for your Wi-Fi Network and press “Next” .....	12
3.3.6 When the activation is completed, the sensor will be added to the device management page. In the illustration below, the name of the Security Shuttle is “Location10” and the name of the sensor is “Garage Door Opener E34D...” .....	12
<b>Chapter 4. Garage Door Control Button Settings .....</b>	<b>13</b>
4.1 Display Name.....	14

<b>Chapter 5. Starting to Use the Garage Door Control Button.....</b>	<b>15</b>
5.1 Once the device is successfully added, choose one of the following 3 installation methods (please review all methods thoroughly before choosing which might be best for your scenario): .....	15
5.1.1 Installation – Method 1 – Replace Existing Opener .....	15
5.1.2 Installation – Method 2 – Connect To Existing Opener .....	17
5.1.3 Installation – Method 3 – Directly Connect To the Garage Door Motor .....	19
5.2 Operating – You can control your garage door remotely via the APP or by simply pressing the Garage Door Control Button.....	21
5.2.1 Local control by pressing button – Press button to open/close your garage door. LED indicator will turn red and trigger an action. ....	21
5.2.2 Remote control via the APP – There are 2 methods in opening the garage door (Note: Every action will have a 15-second cool-down period before the next action can be processed. It is represented by a grey control button).....	22
<b>Chapter 6. Notifications .....</b>	<b>24</b>
<b>Chapter 7. Other Information.....</b>	<b>26</b>
7.1 LED Indicator .....	26
7.1.1 Green – Power on.....	26
7.1.2 Blinking Green – WiFi disconnect.....	26
7.1.3 Red – Open/Close action is in progress .....	26
7.2 Reset .....	26
7.2.1 A hard reset will restore your device to factory default settings. ....	26
7.2.2 Press and hold down the reset button on the back of device with a pin for approximately 5-8 seconds. 26	
7.2.3 The LED indicator will blink red and green then orange to blinking green. ....	26
<b>Appendix – Glossary of Terms .....</b>	<b>27</b>

# Chapter 1. Introduction

---

The Garage Door Control Button allows you to remotely open and close your garage door. The owner and authorized users will be sent push notifications when the device is in operation. Working in conjunction with a Home8 camera, you can view the garage door opening and closing in live streaming video via the Home8 app.

Key features and specifications of the sensor.

- Wi-Fi and Security: IEEE 802.11b with WAP/WPA2 PSK
- Use the Home8 mobile app to open and close your garage door remotely while streaming live video
- Sends a push notification to owner and all authorized users when it's in operation for added security
- Keeps a time-stamped log of when it's in use
- Max. switching current: 2A
- Max. switching capacity: 62.5VA/ 60W
- 15-second cooldown period for every action

## 1.1 System Requirement

This section explains the system requirement when using the camera.

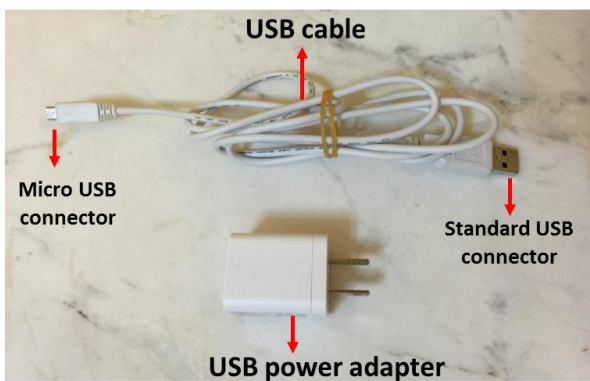
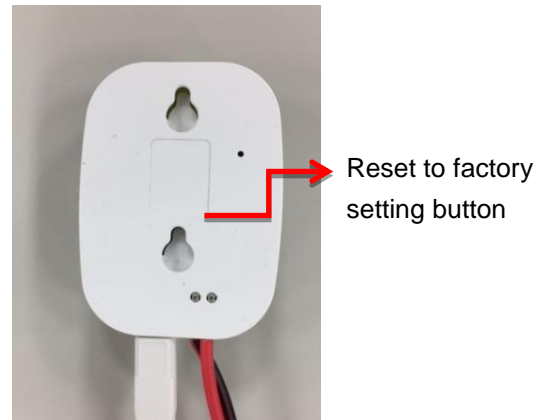
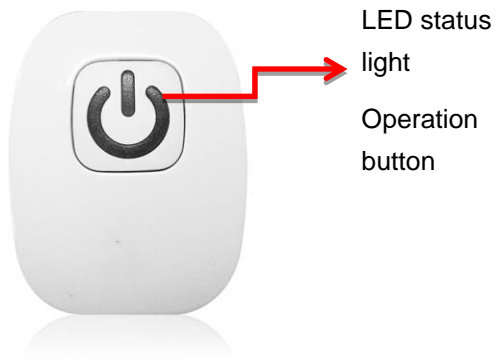
Network	When camera is connected to Security Shuttle*	Router with <ul style="list-style-type: none"><li>- 10/100Mbps RJ45 LAN port</li><li>- DHCP service</li></ul>
	When camera is connected directly to Wi-Fi Router	Wi-Fi Router supports <ul style="list-style-type: none"><li>- IEEE 802.11n, 802.11g, 802.11b</li><li>- WEP/WPA2-PSK Wireless Security</li></ul>
Mobile Device		An Apple iPhone, iPad, or Android mobile device with: <ul style="list-style-type: none"><li>- iOS (version 8.1 above)</li><li>- Android (version 4.1 above)</li></ul>

\* See Appendix – Glossary of Terms.

## Chapter 2. Hardware Overview

---

This section provides an overview of the Garage Door Control Button and its accessories.



## Chapter 3. Garage Door Control Button Setup

---

### 3.1 Powering up the sensor

#### 3.1.1 Press and hold down the button



### 3.1.2 While holding down the button, attach the power cable



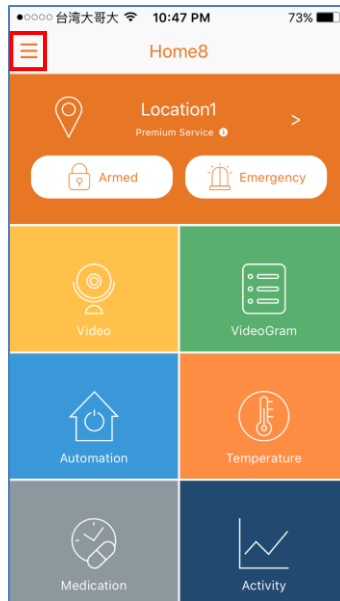
### 3.1.3 Continue holding down the button for 5 seconds until blinking (orange-red) starts



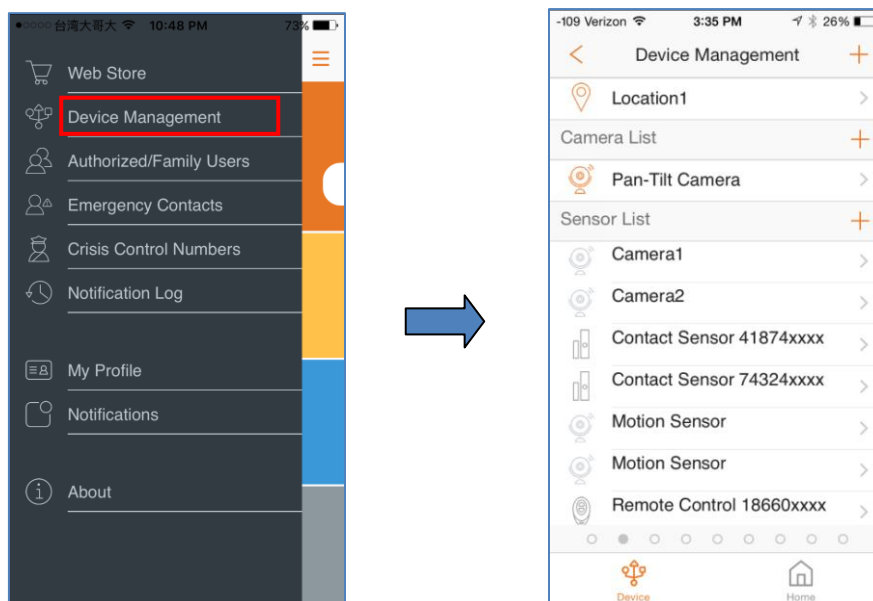
## 3.2 Adding the Sensor to an OPU/Shuttle

Before you begin using the sensor, it will need to be added to a system first.

### 3.2.1 Tap the menu icon ☰ to show the sidebar menu.

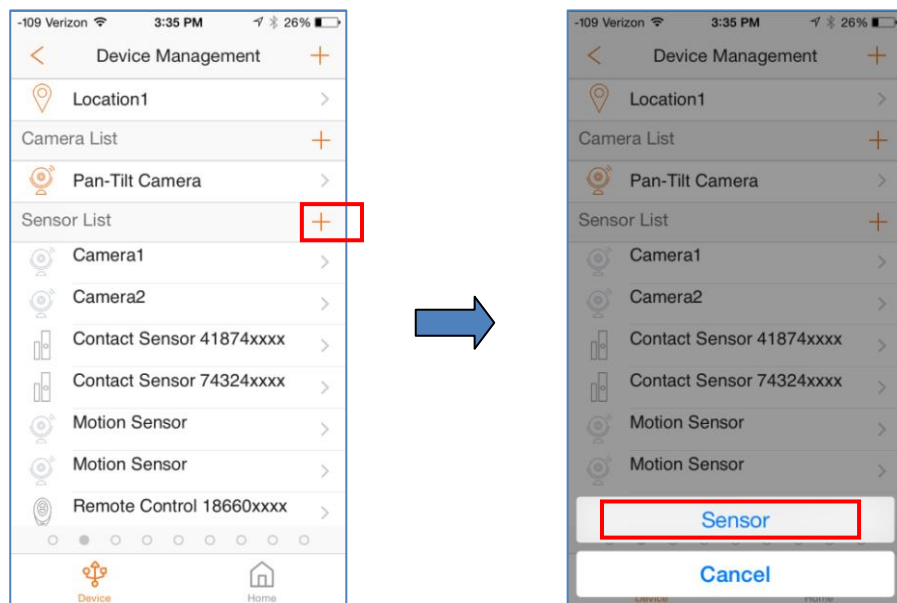


### 3.2.2 Tap “Device Management”. If you have more than one security shuttle, you may need to swipe left more than once to find the OPU/Shuttle to which you would like to add the sensor.

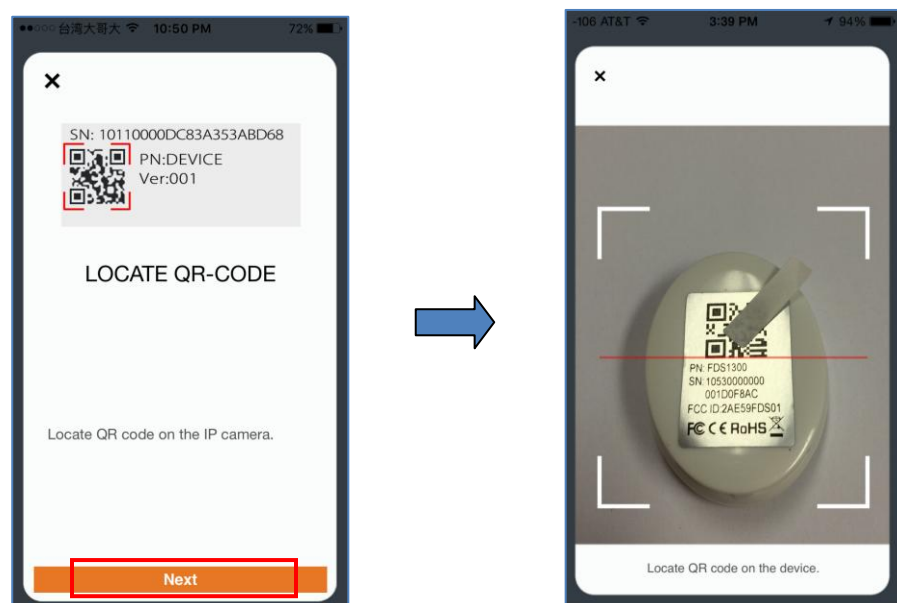




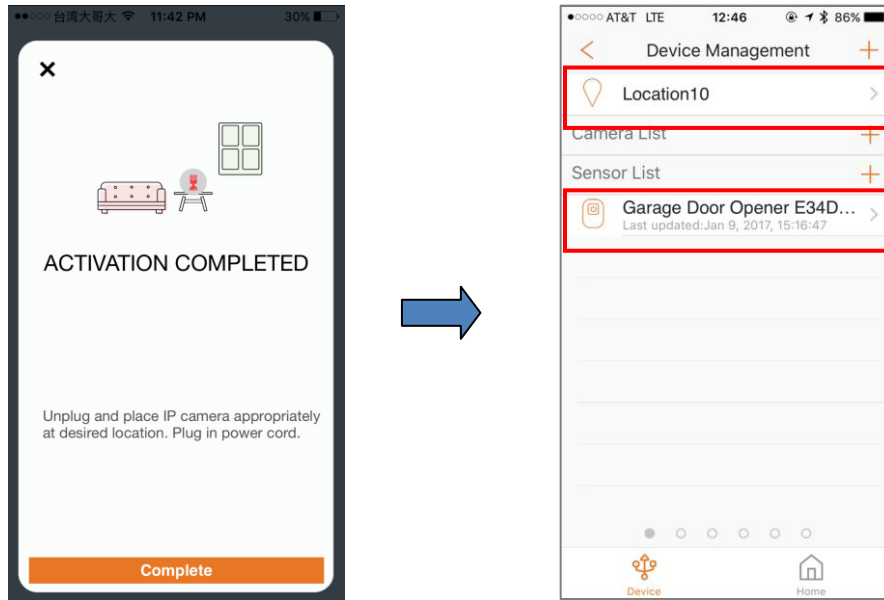
### 3.2.3 Tap on the '+' next to Sensor List. Tap on 'Sensor' at the bottom of the page.



### 3.2.4 Follow the on-screen instructions and press "Next". Scan the QR-code located on the bottom of the sensor and the "device adding" process will begin.



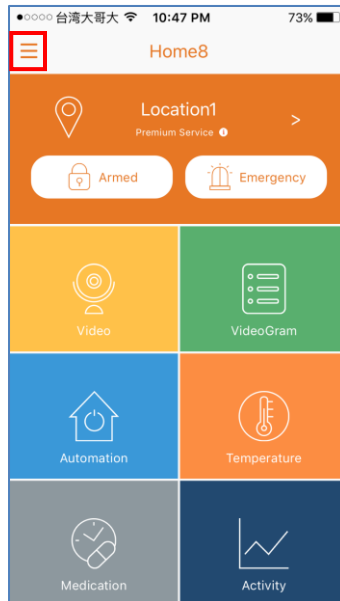
**3.2.5 When the activation is completed, the sensor will be added to the device management page. In the illustration below, the name of the Security Shuttle is “Location10” and the name of the sensor is “Garage Door Opener E34D...”.**



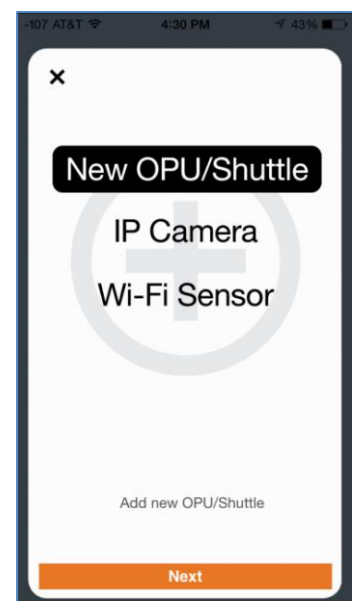
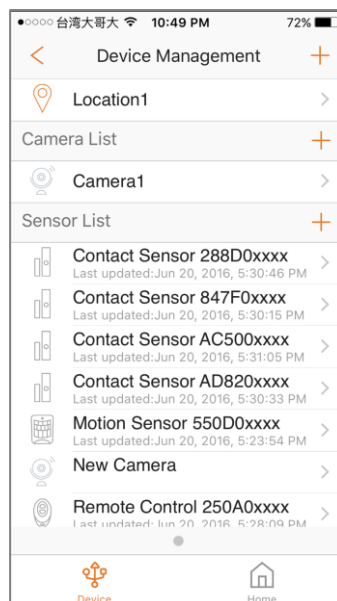
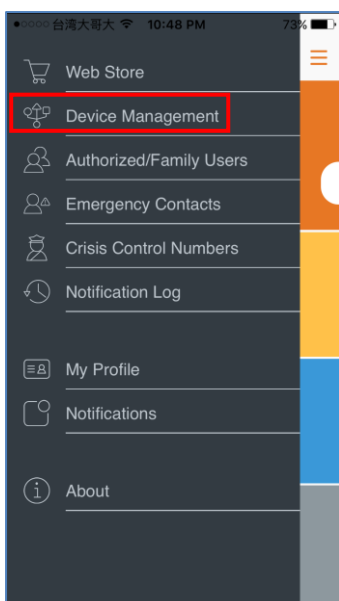
### 3.3 Adding the Sensor to a Virtual OPU/Shuttle

Before you begin using the sensor, it will need to be added to a system first.

#### 3.3.1 Tap the menu icon ☰ to show the sidebar menu.



#### 3.3.2 Tap “Device Management”. If you have more than one security shuttle, you may need to swipe left more than once to find the “New OPU/Shuttle” page.



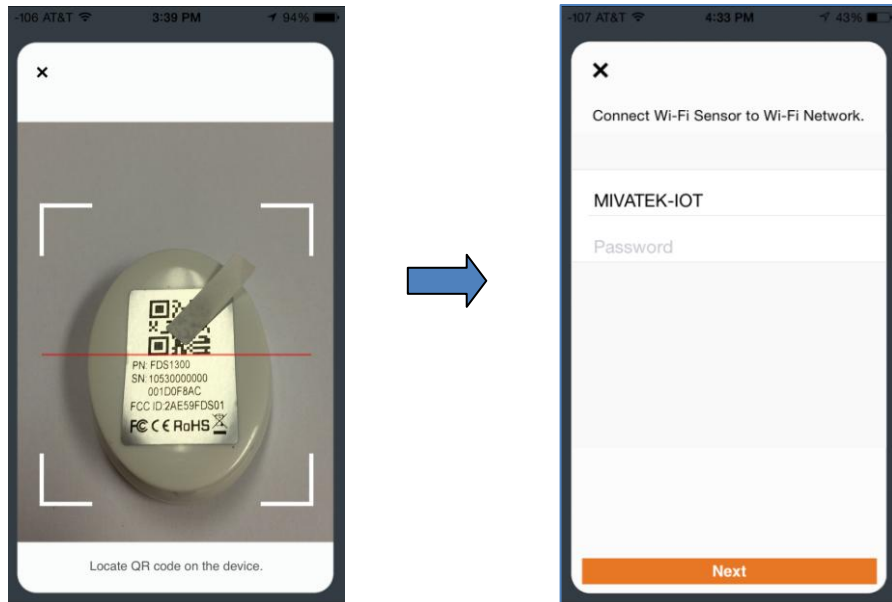
### 3.3.3 Select “Wi-Fi Sensor” and press “Next”.



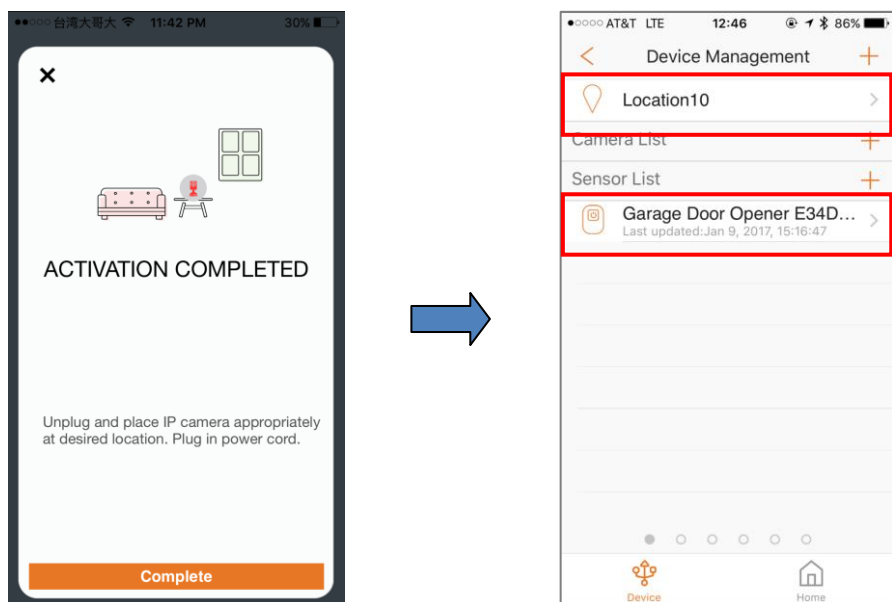
### 3.3.4 Follow the on-screen instructions and press “Next”.



**3.3.5 Scan the QR-code located on the bottom of the sensor and the “device adding” process will begin. Enter the password for your Wi-Fi Network and press “Next”.**




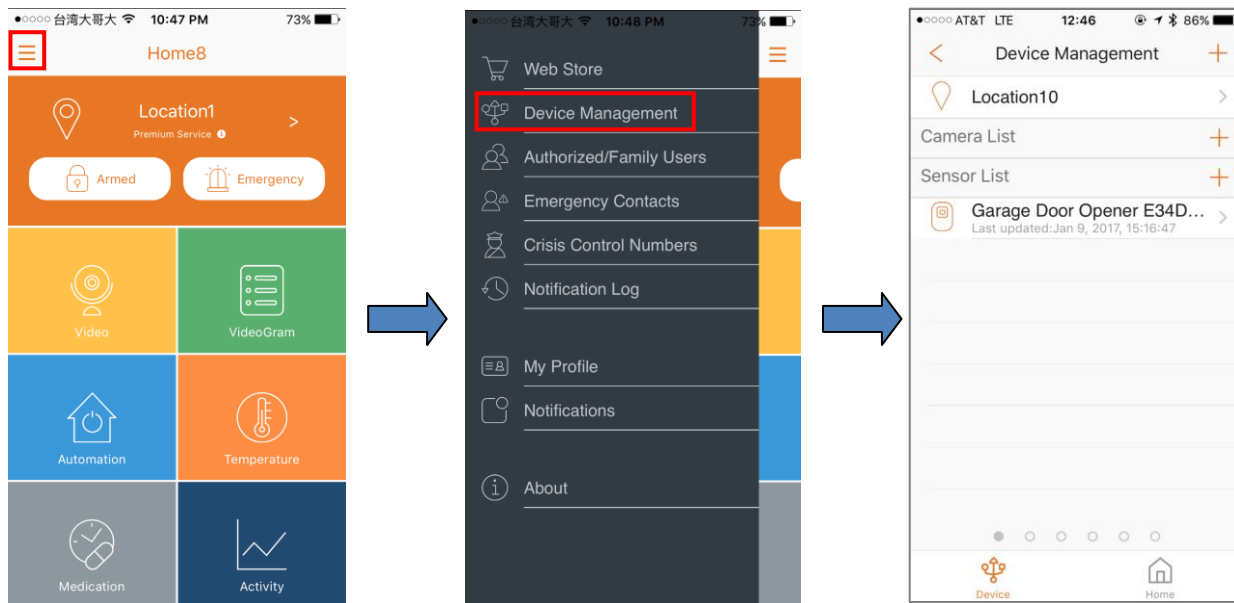
**3.3.6 When the activation is completed, the sensor will be added to the device management page. In the illustration below, the name of the Security Shuttle is “Location10” and the name of the sensor is “Garage Door Opener E34D...”.**



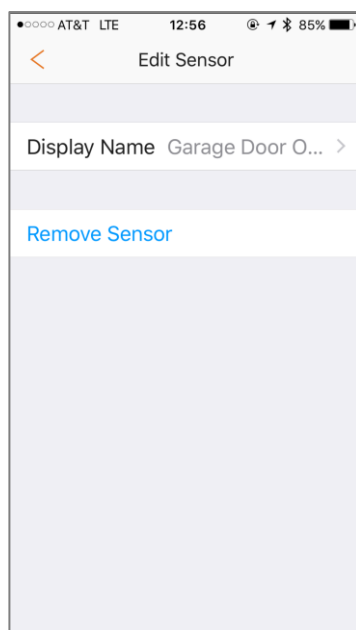
## Chapter 4. Garage Door Control Button Settings

For relevant sensor setting adjustments, follow the steps shown below.

1. Tap the menu icon  to show the sidebar menu.
2. Tap “Device Management”; then tap “Garage Door Opener XXXXXxxx” under “Sensor List” to reach the “Edit Sensor” page.



The following illustration shows the sensor setting that can be adjusted.

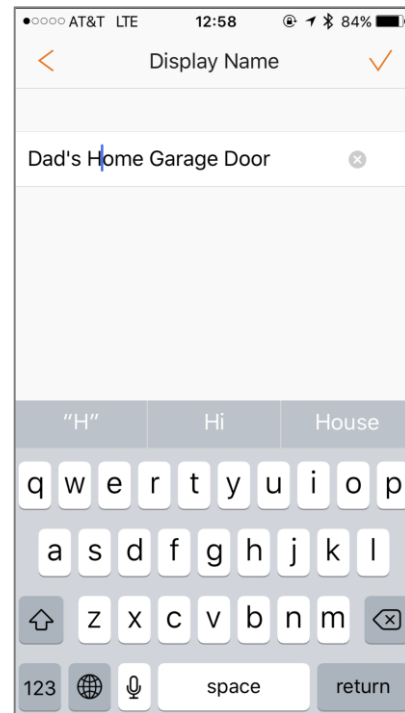


- Display Name

## 4.1 Display Name

This option allows you to change the display name. To do so, tap “Display Name”; then, change the name according to your preference. When finished, tap the check icon located on the upper-right corner.

**Note:** The maximum length of the display name is 40 characters.



## Chapter 5. Starting to Use the Garage Door Control Button

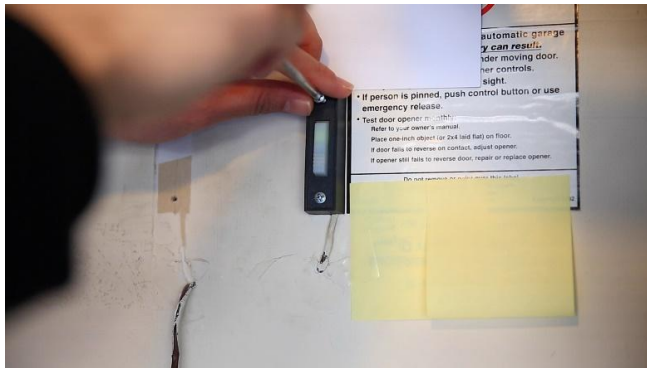
---

At this stage, your sensor is now ready for use.

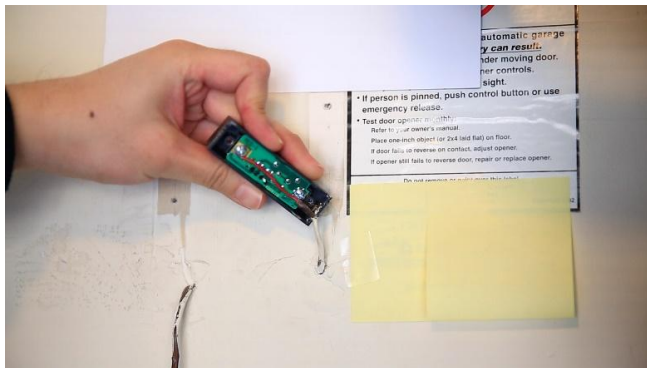
**5.1 Once the device is successfully added, choose one of the following 3 installation methods (please review all methods thoroughly before choosing which might be best for your scenario):**

### 5.1.1 Installation – Method 1 – Replace Existing Opener

#### 5.1.1.1 Unscrew opener from the wall



#### 5.1.1.2 Access the back of the opener



#### 5.1.1.3 Unscrew wires from the opener (Note: The 2 wires will not cause a harmful electrical shock)





automatic garage  
y can result,  
der moving door,  
ner controls,  
sight.

- If person is pinned, push control button or use emergency release.
- Test door opener.
  - Refer to your owner's manual.
  - Place hand with finger on 24k load limit on floor.
  - If door fails to reverse on contact, adjust opener.
  - If opener still fails to reverse door, repair or replace opener.

Do not attempt to adjust motor this lock

automatic emergency release  
 can release door moving door  
 new controls. sight.  
 person is pinned, push control button or use  
 emergency release.  
 Test door operator. 1. Push  
 Refer to your owner's manual.  
 Place one inch object on 24 inch rail on floor.  
 If door fails to reverse on contact, adjust opener.  
 If opener still fails to reverse door, repair or replace opener.  
 Do not remove, or adjust more than 1 inch.

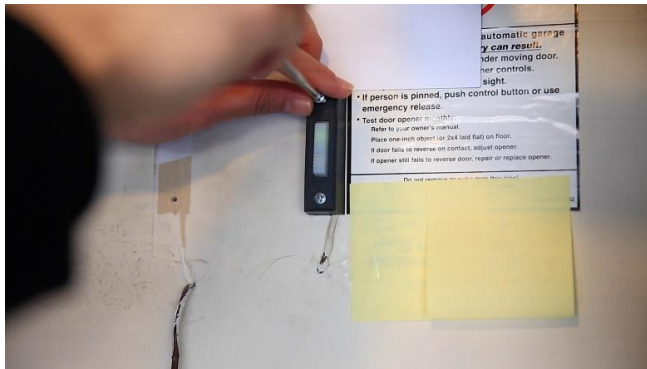
• If person is pinned, push control button or use emergency release.  
 • Test door operation.

Refer to your owner's manual.  
 Place one-inch object on 2x4 test fast on floor.  
 If door does not reverse on contact, adjust opener.  
 If opener still fails to reverse door, repair or replace opener.

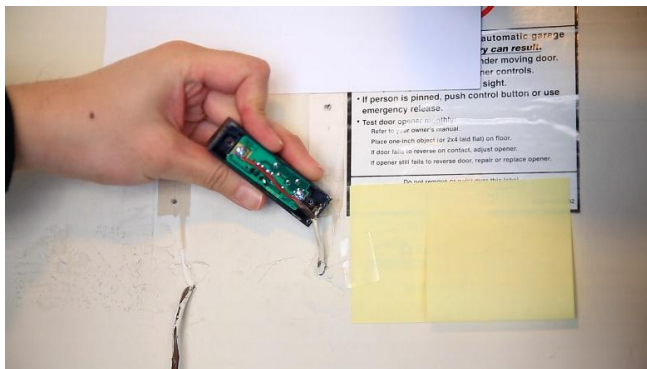
This tool complies with market access requirements.

## 5.1.2 Installation – Method 2 – Connect To Existing Opener

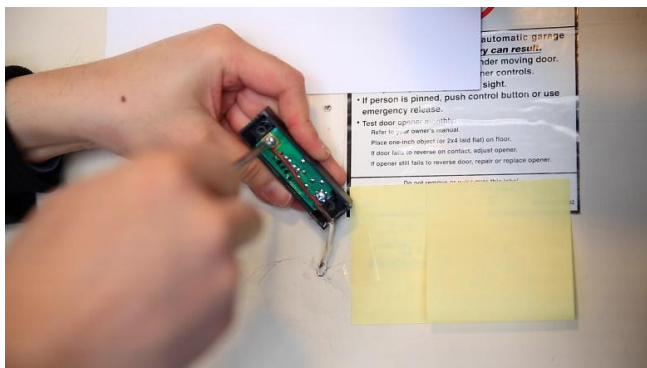
### 5.1.2.1 Unscrew opener from the wall



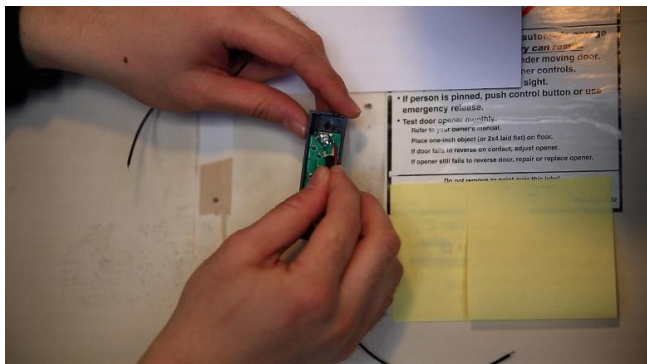
### 5.1.2.2 Access the back of the opener



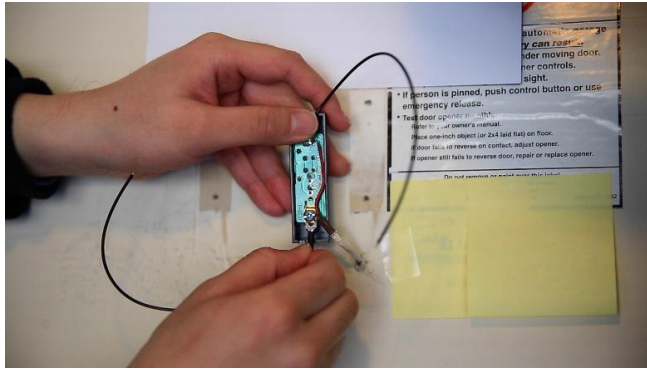
### 5.1.2.3 Loosen the screws (Note: The 2 wires will not cause a harmful electrical shock)



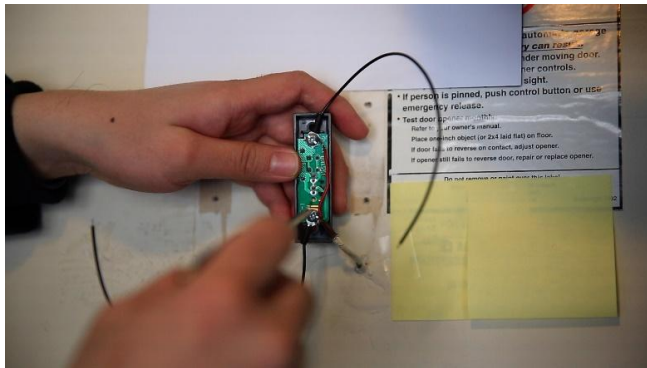
### 5.1.2.4 Attach a U-fork wire to the top screw



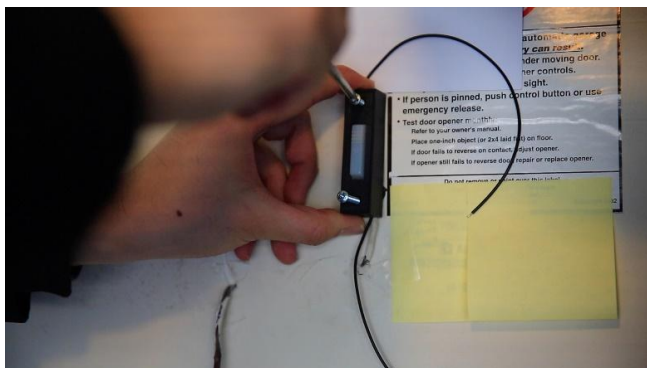
#### 5.1.2.5 Attach a U-fork wire to the other screw



#### 5.1.2.6 Tighten the screws



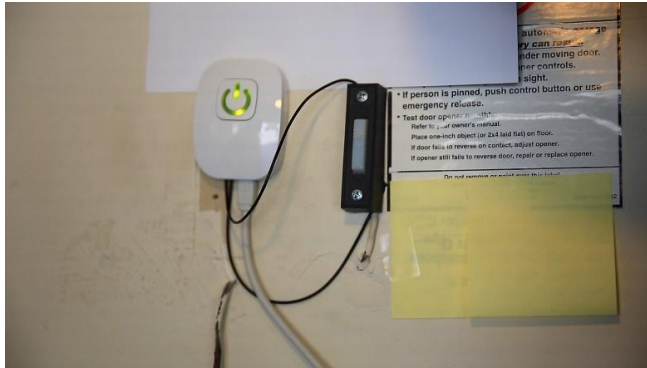
#### 5.1.2.7 Remount the existing opener



#### 5.1.2.8 Insert wires into the Garage Door Control Button (one per hole, either hole choice is fine)



#### 5.1.2.9 Attach the power adapter

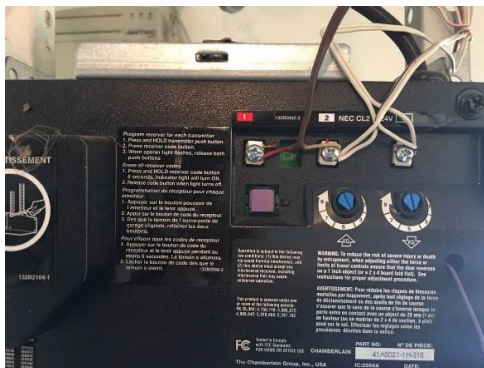


#### 5.1.2.10 Mount the Garage Door Control Button via Double-sided tape or screws



### 5.1.3 Installation – Method 3 – Directly Connect To the Garage Door Motor

#### 5.1.3.1 Access the wire panel of the motor unit

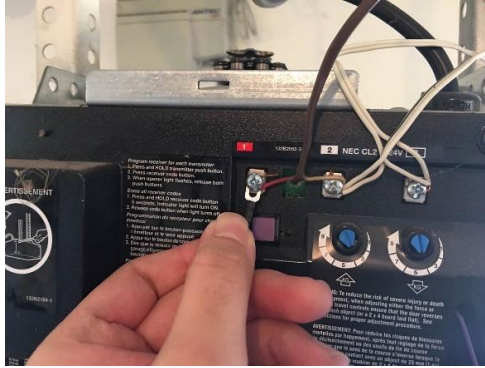


#### 5.1.3.2 Loosen the garage door opener wire screws (Note: The 2 wires will not cause a harmful electrical shock)

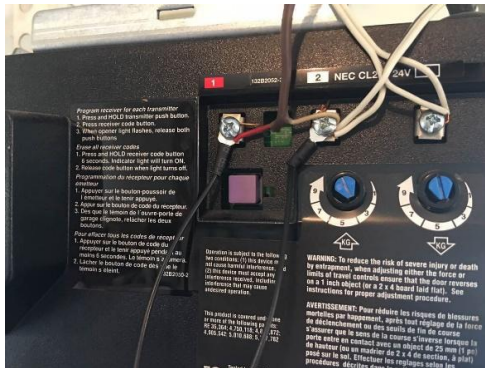




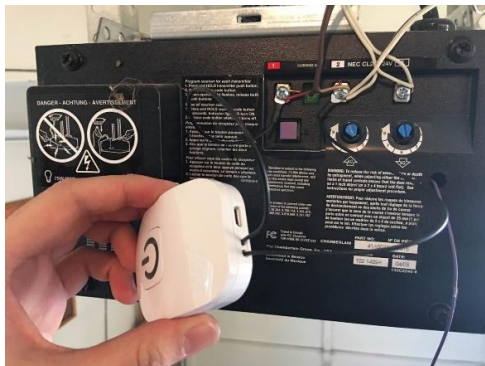
#### 5.1.3.3 Attach a U-fork wire to one screw



#### 5.1.3.4 Attach a U-fork wire to the other screw



#### 5.1.3.5 Insert wires into the Garage Door Control Button (one per hole, either hole choice is fine)



#### 5.1.3.6 Attach the power adapter



5.1.3.7 Mount the Garage Door Control Button via Double-sided tape or screws



**5.2 Operating – You can control your garage door remotely via the APP or by simply pressing the Garage Door Control Button**

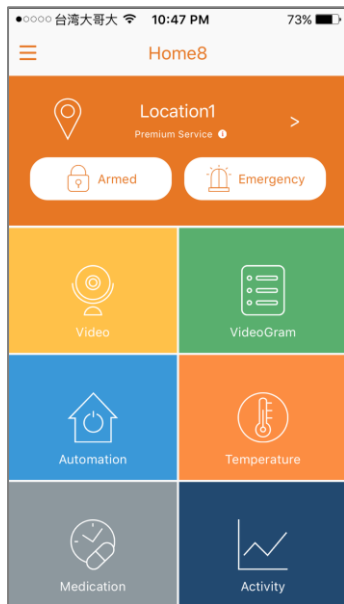
**5.2.1 Local control by pressing button – Press button to open/close your garage door. LED indicator will turn red and trigger an action.**



## 5.2.2 Remote control via the APP – There are 2 methods in opening the garage door (Note: Every action will have a 15-second cool-down period before the next action can be processed. It is represented by a grey control button).

### 5.2.2.1 Method 1

#### 5.2.2.1.1 Tap “Video” tile



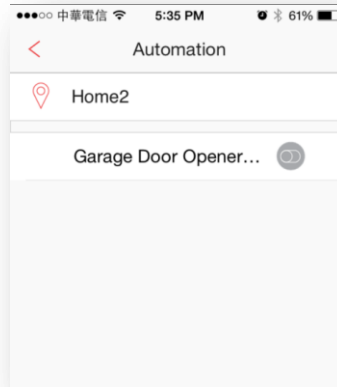
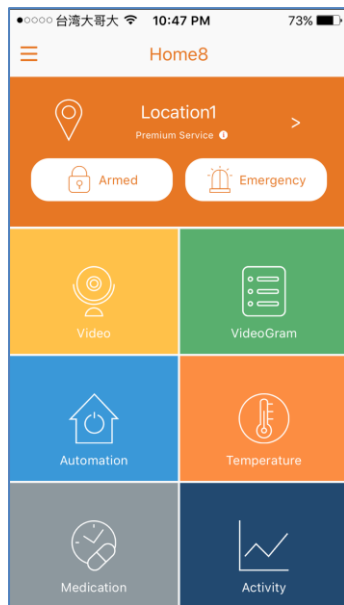
#### 5.2.2.1.2 Tap Automation button



5.2.2.1.3 By pressing the garage door opener control button icon (when red), you can easily open/close your garage door remotely from your smart device.

## 5.2.2.2 Method 2

### 5.2.2.2.1 Tap “Automaation” tile



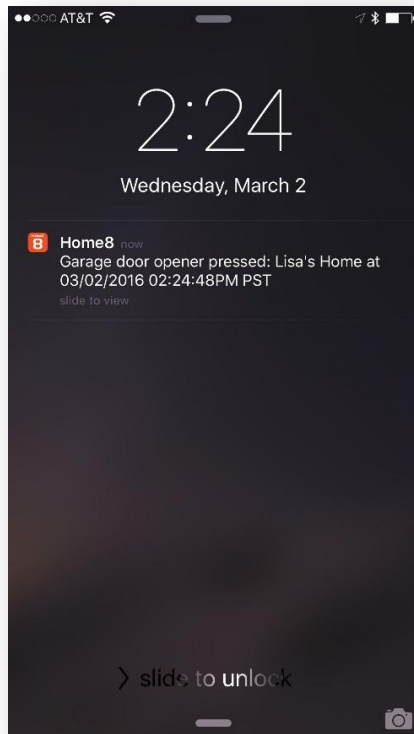
5.2.2.2.2 By pressing the garage door opener control button icon (when red), you can easily open/close your garage door remotely from yur smart device.



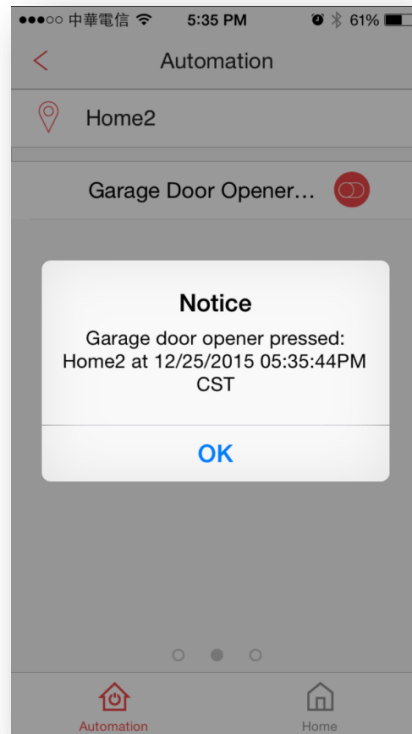
## Chapter 6. Notifications

---

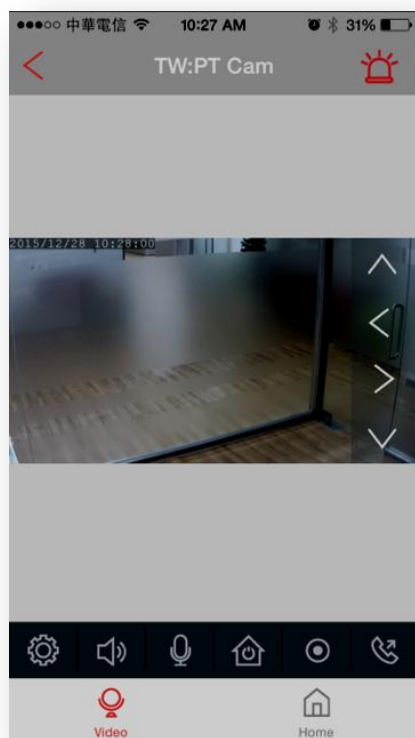
Whether the system is in Armed, Disarmed, or Stay Mode status, once the garage door opener button is pressed, the owner and authorized users will get a notification of “Garage door opener pressed”.



(If your phone is locked)



(If you are in the APP)



(If you are in Full Screen Video Mode)

## Chapter 7. Other Information

---

### 7.1 LED Indicator

#### 7.1.1 Green – Power on

#### 7.1.2 Blinking Green – WiFi disconnect

#### 7.1.3 Red – Open/Close action is in progress



### 7.2 Reset

#### 7.2.1 A hard reset will restore your device to factory default settings.

#### 7.2.2 Press and hold down the reset button on the back of device with a pin for approximately 5-8 seconds.

#### 7.2.3 The LED indicator will blink red and green then orange to blinking green.



## Appendix – Glossary of Terms

---

- **Arm:** The cameras and other security related sensors in the system are actively monitoring the surroundings. Any suspicious activity that has been detected by the camera or sensor will prompt the app to immediately send a notification. A recording will also be performed by the camera(s) that witnessed the event.
- **Disarm:** The cameras and other security related sensors in the system are no longer actively monitoring the surroundings. The system will not react to any suspicious activity detected by these devices. No notification will be sent.

**Note:** If the continuous recording function is turned on, video recording will always work regardless if the system is armed or disarmed. For more details regarding the continuous recording function, see *Section 4.8 Turn On/Off Continuous Recording*.

- **Event:** An event is created when any camera or sensor detects an activity, or is manually triggered by the user.
- **Security Shuttle:** Functions as a secure and intelligent hub to manage the devices and communicate with the cloud server. Currently, there are three types – **OPU1120**, **OPU2120**, and **OPU3120**.
- **Stay Mode:** The system is armed, but only the pre-selected camera and sensors will be actively monitoring the surroundings, and send a notification when any suspicious activity is detected.